

## CONDUR ISR

### Heavy type bend

IMPACT RESISTANCE: **6J**

RESISTANCE TO COMPRESSION: **1250 Nt**

CONDUR bend is a part of CONDUR – CONFLEX conduit system for cable management and protection. It has the same properties as CONDUR conduit and is produced by a fully automated production line.

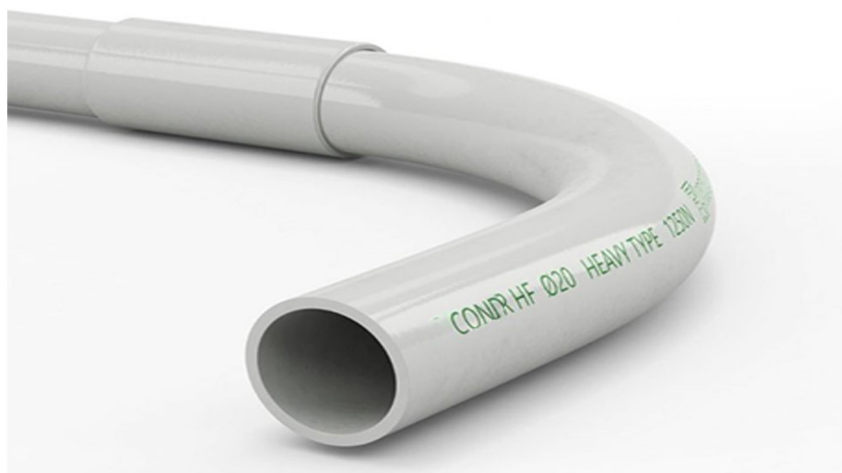
CONDUR bend incorporates a special anti – rodent additive to maximize safety in electrical installations from animal attacks. (Patent Protected by European Patent Office).

#### APPLICATION FIELD

Ideal for outdoor exposed installations which require increased safety measures and high mechanical requirements such as civil engineering (industrial buildings, infrastructure projects) and electric power stations. It doesn't attract rodents and is the ideal solution for outdoor installations through its exceptional resistance to UV radiation. Their high impact strength, at low temperature environments, make them also ideal for cold weather conditions.

APPLICATION STANDARD:	<b>EN 61386.21</b>
INSTRUCTIONS FOR COMPLIANCE:	<b>2014/35/EU(LVD), 2011/65/EU(RoHS)</b>
COLOR:	<b>RAL 7035 Light grey</b>
NOMINAL DIAMETER:	<b>Nominal outer diameter (DN/OD)</b>
TIGHTNESS DEGREES:	<b>min IP 65</b>





#### Properties

Resistance to impact	6J (at -25°C)
Lower temperature range	-25°C
Upper temperature range	+60°C
Electrical characteristics	With electrical insulated characteristics
Protection against ingress of solid objects	min IP65
Protection against ingress of water	min IP65
Resistance to flame propagating	Non flame propagating

#### Additional properties

Raw material	Heavy metals free (RoHS), specially stabilized thermoplastic U-PVC
Ageing resistance	UV stabilized >10 years
Rodent repellent	Not attractive to rodents
Antistatic technology	Protection against static electricity
Antiscratch Technology	Protection against scratching from cable routing