

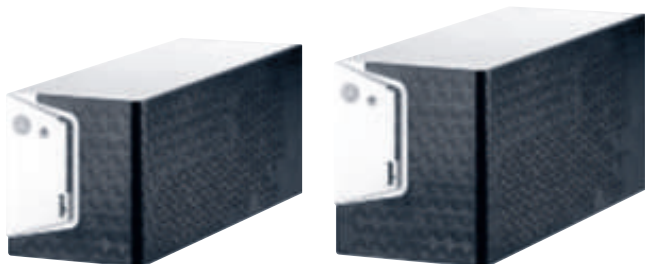
# Keor SP

## Single phase VI



# Keor SP

## technical characteristics



3 101 83

3 101 92

### Features:

- 3-colour LED bar
- Mute button
- Internal AVR (Automatic Voltage Regulator)
- USB Port
- Available outputs sockets in IEC, German or French type

Pack	Cat.Nos	UPS international socket				
		Nominal power (VA)	Active power (W)	Backup time (min)	No. of sockets IEC	Communication ports
1	3 101 80	600	360	up to 15	4	USB HID
1	3 101 83	800	480	up to 15	4	USB HID
1	3 101 86	1000	600	up to 15	6	USB HID
1	3 101 89	1500	900	up to 15	6	USB HID
1	3 101 92	2000	1200	up to 15	6	USB HID

Pack	Cat.Nos	UPS with IEC+ German standard socket				
		Nominal power (VA)	Active power (W)	Backup time (min)	No. of sockets IEC+GER	Communication ports
1	3 101 81	600	360	up to 15	1+1	USB HID
1	3 101 84	800	480	up to 15	1+1	USB HID
1	3 101 87	1000	600	up to 15	2+2	USB HID
1	3 101 90	1500	900	up to 15	2+2	USB HID
1	3 101 93	2000	1200	up to 15	2+2	USB HID

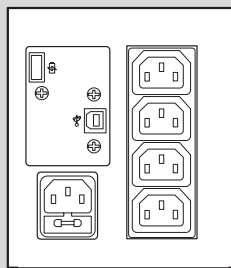
Pack	Cat.Nos	UPS with IEC+ French standard socket				
		Nominal power (VA)	Active power (W)	Backup time (min)	No. of sockets IEC+GER	Communication ports
1	3 101 82	600	360	up to 15	1+1	USB HID
1	3 101 85	800	480	up to 15	1+1	USB HID
1	3 101 88	1000	600	up to 15	2+2	USB HID
1	3 101 91	1500	900	up to 15	2+2	USB HID
1	3 101 94	2000	1200	up to 15	2+2	USB HID

NOTE: The stated back-up times in minutes are estimated and may vary according to the load characteristics, operating conditions and environment

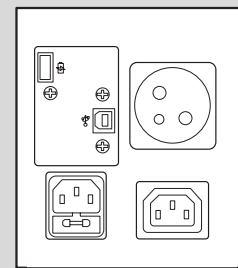
### Technical characteristics

General characteristics	3 101 80	3 101 83	3 101 86	3 101 89	3 101 92
	3 101 81	3 101 84	3 101 87	3 101 90	3 101 93
	3 101 82	3 101 85	3 101 88	3 101 91	3 101 94
Nominal power (VA)	600	800	1000	1500	2000
Active power (W)	360	480	600	900	1200
Technology	Line Interactive VI				
Waveform	Simulated SineWave				
<b>Input characteristics</b>					
Input voltage	230 V ± 10%				
Input frequency	50-60 Hz +/- 5Hz				
Input voltage range	170 V-290 V				
<b>Output characteristics</b>					
Output voltage	230 V ± 10%				
Output frequency (nominal)	50/60 Hz +/-1Hz				
USB charger/Voltage	-	Type A female / 5 V			
<b>Communication and management</b>					
Screen and signalling	Two buttons and LED bar for real-time control of the status of the UPS				
Remote control	Available				
<b>Mechanical characteristics</b>					
Dimensions W x H x D (mm)	120 x 138 x 330			148 x 173 x 380	
Net weight (kg)	5	5.5	9	10.5	11.8
<b>Ambient conditions</b>					
Ambient operating temperature (°C)	0 to 40°C				
Relative humidity (%)	< 95% non-condensing				
Noise at 1 m (dBA)	< 40				
<b>Certifications</b>					
Reference product standards	EN 62040-1, EN 62040-2				

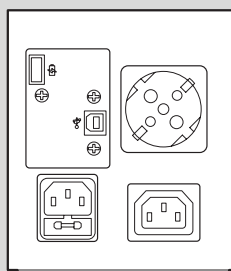
### IEC Socket



### French standard socket



### German standard Socket



NOTE: The drawings refer to Keor SP 800 model