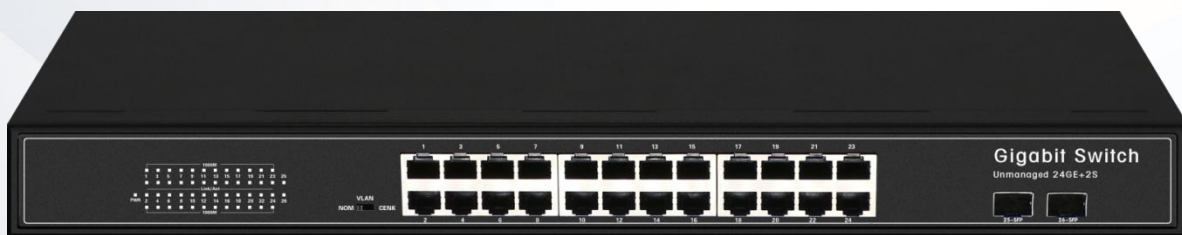


LA-SWAI-G0224-S

Ethernet Switch 2xGigabit SFP, 24x10/100/1000Base-T Port

High quality network chip, VLAN setting, Flow control



Overview

24Port 10/100/1000BASE-T with uplink 2Port SFP Gigabit Ethernet Switch is for high-speed network connectivity. It can automatically identify and determine the correct transmission speed and half/full duplex mode of the attached devices with its 24 Gigabit ports that support 9K jumbo frame feature. It can handle extremely large amounts of data transmission in a secure topology linking to a backbone or high-power servers. Support VLAN port isolation mode features that can help to prevent the connected clients' multi-cast or broadcast storm from influencing each other. Flow Control function enables routers and servers to directly connect to the Switch for fast and reliable data transfer.

Features

- IEEE 802.3, IEEE 802.3u, IEEE 802.3x, IEEE 802.3ab, IEEE802.3z, IEEE802.3x
- Support port auto flip (Auto MDI/MDIX)
- Automatically supplied to adaptive devices
- Indicator monitoring status and failure analysis
- Support VLAN Port isolation mode
- Flow control mode full-duplex with IEEE 802.3x, and half-duplex adopts back pressure standard.
- Fan-less design, reducing power consumption

Specifications

Power	Input AC 110-240V, 50/60Hz
Fixed Port	24*10/100/1000Base-TX RJ45 port, 2*1000M SFP
DIP Function	<p>(N) Normal Mode, Default. All ports can communicate with each other, the transmission distance is within 100 meters.</p> <p>(V) VLAN Port Isolation Feature. When switching the DIP to the 'V' position, ports 1 to 24 are not able to communicate with one another. This helps to prevent the IP camera's multicast or broadcast storm from influencing one another.</p> <p>(C) Flow Control mode</p>
Network Protocol	<p>IEEE 802.3</p> <p>IEEE 802.3i 10BASE-T</p> <p>IEEE 802.3u 100BASE-TX</p> <p>IEEE 802.3ab 1000BASE-T</p> <p>IEEE 802.3z 1000BASE-X</p> <p>IEEE 802.3x</p> <p>IEEE 802.1q</p>
Port Specification	10/100/1000BaseT (X) Auto, Full/half duplex MDI/MDI-X adaptive

Transmission Mode	Store and Forward (full wirespeed)
Bandwidth	56Gbps (non-blocking)
Packet Forwarding	40.32Mpps, supports 9K jumbo frame transmission
MAC Address	8K
Buffer	4.1M
Transmission Distance	10BASE-T: Cat3,4,5 UTP (≤ 250 meter) 100BASE-TX: Cat5 or later UTP (150 meter) 1000BASE-TX: Cat6 or later UTP (150 meter) 1000BASE-SX: 62.5 μ m/50 μ m MMF (2m~550m) 1000BASE-LX: 62.5 μ m/50 μ m MM (2m~550m) or 10 μ m SMF(2m~5000m)
Power Consumption	$\leq 30W$
LED Indicator	PWR: Power LED 1-24: (Link LED=10/100M Link, 1000M=Gigabit Link) 25 26: (SFP LED)
Operating Temp./Humid.	-10~+55 $^{\circ}C$; 5%~90% RH, Non-condensation
Storage Temp./Humid.	-40~+75 $^{\circ}C$; 5%~95% RH, Non-condensation
Product size (L*W*H)	440mm*140mm*45mm
Packing size (L*W*H)	513mm*220mm*95mm
N.W/G.W (kg)	1.6kg/2.2kg
Installation	Rack-mount
Lightning Proof	3KV 8/20us
Protection Level	IP30
Certificates	CE/FCC/RoHS

Applications

With simple and convenient installation and maintenance methods and rich business features, it helps users to build a safe and reliable high-performance network. It can be widely used in Ethernet access scenarios such as small and medium-sized enterprises, Internet cafes, hotels, and schools.

- **Metro Optical Broadband Network**

Data network operators such as telecommunications, cable TV, and network system integration

- **Broadband Private Network**

Financial, government, electric power, education, public security, transportation, oil, railway

- **Multimedia Transmission**

Integrated transmission of images/voice/data for remote teaching, conference TV, videophone

- **Real-time Monitoring**

Simultaneous transmission of real-time control signals, images and data

Order Information

P/N	Description
LA-SWAI-G0224-S	Unmanaged Ethernet Switch 2xGigabit SFP, 24x10/100/1000Base-T Port