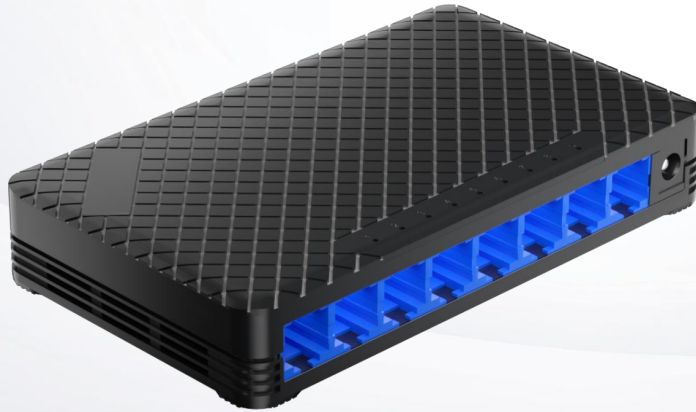


# LA-SW-PF0008

## 8Port 10/100M Fast Ethernet Switch



### Overview

LA-SW-PF0008 is a desktop plastic case 8Port 10/100M Fast Ethernet Switch, adopts storage and forwarding, fan-less design, support power indicator and network interface indicator. Plug and play, small and exquisite appearance, suitable for various home environments and enterprise use environments.

### Features

- Switching capacity: 1.6G
- MAC address: 4K
- Buffer: 2M
- Jumbo frame: 9K bytes
- Power input: DC5V
- Working temperature: -10°C ~ 55°C
- Shell: Plastic, fan-less design
- MTBF: 100000 hours

## Specifications

### Provider Mode Ports

Fixed Port 8\*10/100Base-T, RJ45

Power interface DC terminal

### LED Indicators

PWR Power indicator

Link/Act Link status indicator

### Cable Type & Transmission Distance

Twisted-pair 0-100m (CAT5e, CAT6)

### Electrical Specifications

Input voltage DC 5V

Total Power consumption Full load  $\leq 3W$

### Layer 2 Switching

Switching capacity 1.6G

Packet forwarding rate 1.19Mpps

MAC address table 4K

Buffer 2M

Forwarding delay  $< 5\mu s$

MDX/MIDX Support

Jumbo Frame Support 9K bytes

### Environment

Operating temperature  $-10^{\circ}C \sim 55^{\circ}C$

Storage temperature  $-40^{\circ}C \sim 85^{\circ}C$

Relative humidity 10%~95% (non-condensing)

Thermal methods Fan-less design, natural heat dissipation

MTBF 100,000 hours

### Mechanical Dimensions

Product size 145\*85\*25mm

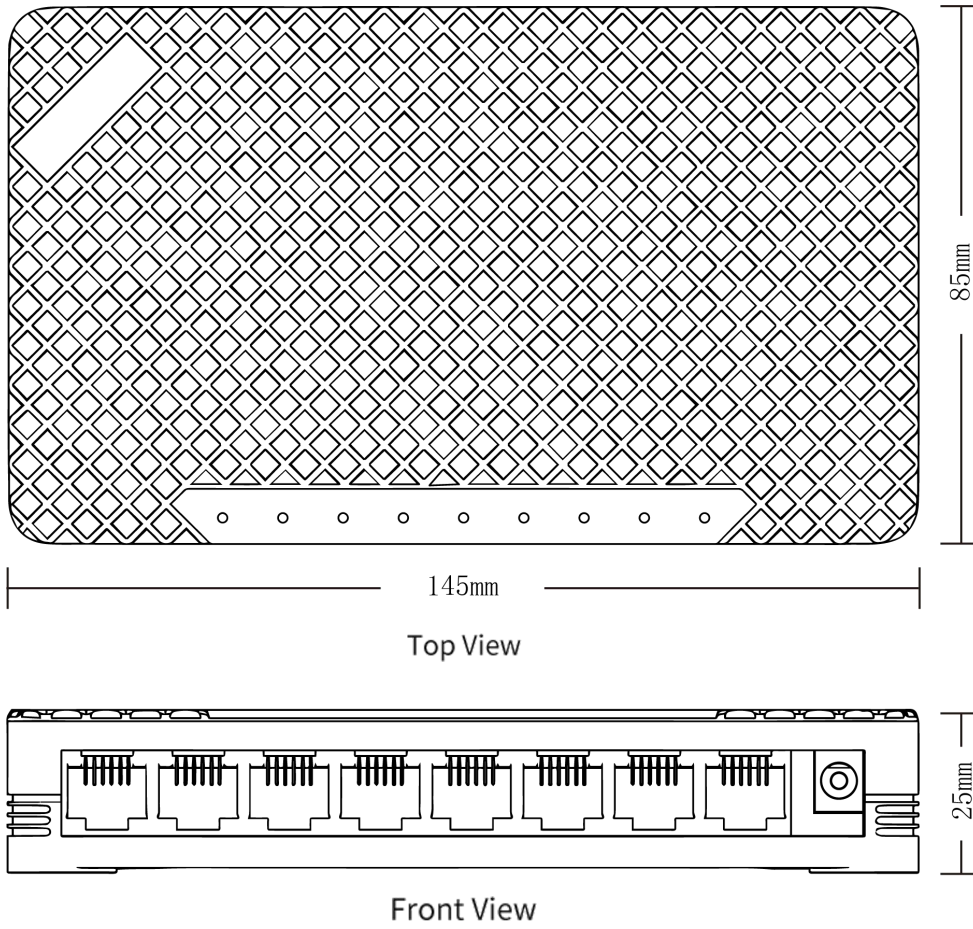
Installation Method Desktop

Net Weight 0.14KG around

### Accessories

Accessories Device, Qualified Certificate, User Manual, Power Adapter

### Dimension



### Ordering Information

PART NO.	DESCRIPTION
LA-SW-PF0008	8Port 10/100M Fast Ethernet Switch, Plastic Housing